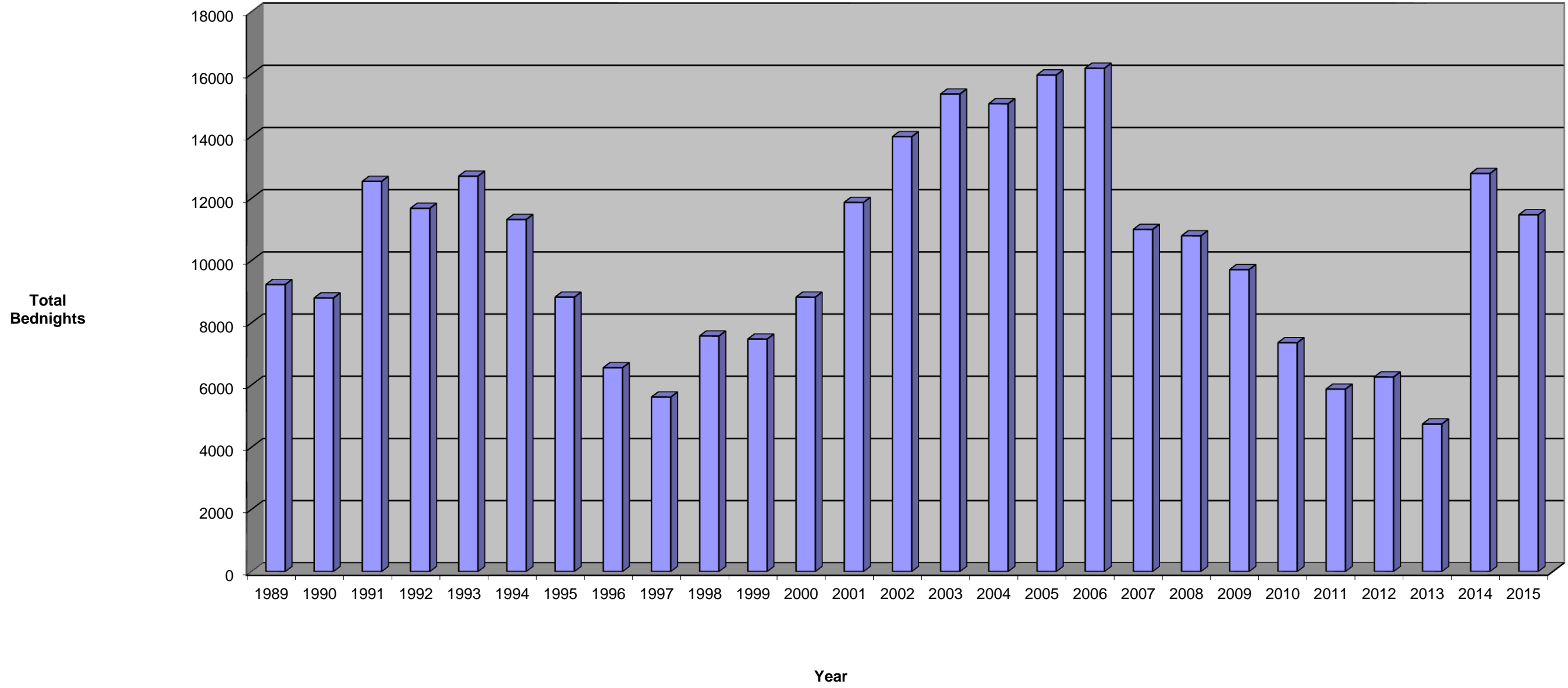


Comparative Yearly Analysis of Bednights in Tompkins County from
1989-2015 (Revised 02/22/2016)



Shelter/Motel Usage Summary, 2015

(As reported to the Homeless and Housing Task Force)

Total Number of Bednights By Provider

Month	Rescue Mission	DSS	Advocacy Center	Total
January	943	438	248	1,629
February	639	155	244	1,038
March	655	29	246	930
April	606	46	93	745
May	588	0	129	717
June	567	185	138	890
July	865	62	222	1,149
August	909	84	241	1,234
September	632	43	227	902
October	543	0	197	740
November	555	1	223	779
December	533	0	184	717
Total	8,035	1,043	2,392	11,470

Rescue Mission = Shelter (9 beds) and motel rooms

DSS = Department of Social Services (Motels)

Advocacy Center = Domestic Violence Shelter (9 beds)

Comparative Yearly Analysis

Year	Bednights	% +/-
1989	9,228	-
1990	8,795	-5%
1991	12,544	43%
1992	11,678	-7%
1993	12,712	9%
1994	11,319	-11%
1995	8,823	-22%
1996	6,554	-26%
1997	5,609	-14%
1998	7,572	35%
1999	7,474	-1%
2000	8,822	18%
2001	11,869	35%
2002	13,981	18%
2003	15,353	10%
2004	15,041	-2%
2005	15,965	6%
2006	16,183	1%
2007	11,001	-32%
2008	10,794	-2%
2009	9,708	-10%
2010	7,357	-24%
2011	5,865	-20%
2012	6,256	7%
2013	4,744	-24%
2014	12,801	170%
2015	11,470	-10%

One bednight= one individual sheltered for one night.

*Prepared by the
Human Services Coalition: 02/22/2016*

Shelter Usage Summary Table

Total Number of Bednights Provided in Tompkins County
by Month for the Years 1991-2015

	1991	1992	1993	1994	1995	1996	1997	1998	1999	2000	2001	2002	2003	2004	2005	2006	2007	2008	2009	2010	2011	2012	2013	2014	2015
Jan.	1,000	917	1,000	943	814	530	397	601	811	608	1,272	1,223	1,425	1,284	1,237	1,700	986	833	907	750	560	606	435	519	1629
Feb.	800	890	1,068	1,100	774	576	480	729	946	756	965	920	1,137	1,690	1,159	1,586	948	690	934	689	575	486	324	500	1038
Mar.	1,129	1,072	955	1,226	820	633	406	475	939	396	761	1,189	1,344	1,685	1,413	1,649	963	1,114	663	581	453	450	315	729	930
Apr.	778	1,384	945	881	653	459	494	565	589	605	530	946	1,156	1,202	1,809	1,274	799	1,062	535	559	469	415	440	1,006	745
May	878	1,126	1,127	651	869	517	296	431	344	854	964	1,136	1,087	1,107	1,476	963	752	783	445	638	400	356	424	1,218	717
June	847	963	1,214	815	436	553	486	588	337	838	854	1,250	1,425	1,105	1,739	1,404	684	801	643	544	483	471	217	1,061	890
July	817	852	1,193	748	755	745	323	690	493	853	1,150	1,435	1,650	1,335	1,353	1,617	814	1,215	958	513	558	701	176	1,013	1149
Aug.	1,176	1,026	1,089	1,126	1,065	695	611	437	585	963	1,038	1,025	1,388	1,319	1,505	1,705	972	766	1,078	653	580	704	385	1,106	1234
Sep.	1,526	1,225	1,380	1,150	666	608	487	582	713	792	866	1,195	1,271	958	936	1,330	819	1,033	850	764	473	592	358	1,179	902
Oct.	1,191	878	1,015	1,092	723	385	724	584	581	575	1,186	1,101	1,064	1,032	926	1,163	1,037	1,010	1,088	680	488	560	652	1,316	740
Nov.	1,405	712	776	846	682	528	341	856	635	617	1,103	1,368	1,181	1,307	1,312	779	1,094	885	974	367	364	440	473	1,408	779
Dec.	997	633	950	741	566	325	564	1,034	501	965	1,180	1,193	1,225	1,017	1,100	1,013	1,133	602	633	619	462	475	545	1,746	717
TOTAL	12,544	11,678	12,712	11,319	8,823	6,554	5,609	7,572	7,474	8,822	11,869	13,981	15,353	15,041	15,965	16,183	11,001	10,794	9,708	7,357	5,865	6,256	4,744	12,801	11,470

Shelter Providers: Rescue Mission (Emergency Shelter), Advocacy Center (formerly Task Force for Battered Women), Tompkins County Department of Social Services, and (1991-1995) EOC.

Prepared by the Human Services Coalition: 01/29/2015 2/22/2016