

# CoC Overview





# What is a Continuum of Care?

Ithaca/Tompkins CoC NY-510 is a local community planning network of public, private, and non-profit partners with the mission of making homelessness **rare, brief, and one-time** in Tompkins County.

## What does this look like?

### Organizing a community-wide effort to prevent and end homelessness

We host and convene committees with topics relevant to the local homeless response system. We also host a bi-monthly educational meeting for the larger community called the Homeless and Housing Taskforce.

### Promoting access to supportive services and housing through Coordinated Entry

Coordinated Entry is a county-wide waitlist for individuals currently experiencing homelessness to be referred to ALL available supportive housing projects within our Continuum of Care.

### Providing funding and support to non-profit agencies

We submit a collaborative application to HUD to attain funding for supportive housing projects, and support our existing housing projects.

## What is homelessness?

In our Continuum of Care, we follow HUD's definition of literal homeless which when an individual is sleeping in a place not meant for human habitation (outside, in a car, etc.) or in our emergency shelter through DSS. Individuals who are fleeing domestic violence are also considered homeless.



### Contact us:

[lbargar@hsctc.org](mailto:lbargar@hsctc.org)  
607-273-8686

### See more at:

<https://hsctc.org/continuum-of-care-coc/>

# The **Mission** of our Continuum of Care

---

Ithaca/Tompkins CoC NY-510 is a local community planning network of public, private, and non-profit partners with the mission of making homelessness rare, brief, and one-time in Tompkins County.

Through this work, we:

**Organize a community-wide effort to prevent and end homelessness**

**Provide funding and support to non-profit agencies**

**Promote access to supportive services and housing**

---

# CoC responsibilities:

**Coordinated Entry.**

**Managing HMIS**

**Facilitating  
Committees**

**Organizing the  
Point in Time Count**

**Writing and  
Submitting the  
Collaborative  
Application**

**Monitoring Projects**

# ENDING HOMELESSNESS

The goal of every Continuum of Care is to build and maintain a homeless response system where experiences of homelessness are...

## Rare

The community has ensured that homelessness among youth, families, single adults, veterans, and people experiencing chronic homelessness are all sustained below their functional zero threshold, Achieved when the system has capacity to rehouse or prevent the homelessness of individuals within the system.

## Brief

The average length of time from identification to move-in is 40 days or less.

## One-time

Of all exits to permanent housing, no more than 5% of positive exits result in a return to the homeless system within two years of exit from the homeless system.

## Equitable

The community has a demonstrated commitment and is tracking progress to reduce disparities in outcomes between groups experiencing homelessness.



# MEASURING PROGRESS

HUD collects data from Continuums of Care regarding their progress towards these goals, called System Performance Measures or SPMs.

Measure 1	Measure 2	Measure 3	Measure 4	Measure 5
<b>Length of Time</b> Persons Remain Homeless	The Extent to which Persons who Exit Homelessness to Permanent Housing Destinations <b>Return to Homelessness</b>	<b>Total Number</b> of Homeless Persons	<b>Employment and Income Growth</b> for Homeless Persons in CoC Program-funded projects	Number of persons who become <b>homeless for the 1st time</b>

# Housing across Tompkins County



**4 out of 5**

individuals who are currently homeless have no supportive beds to enter within our CoC.



**56%**

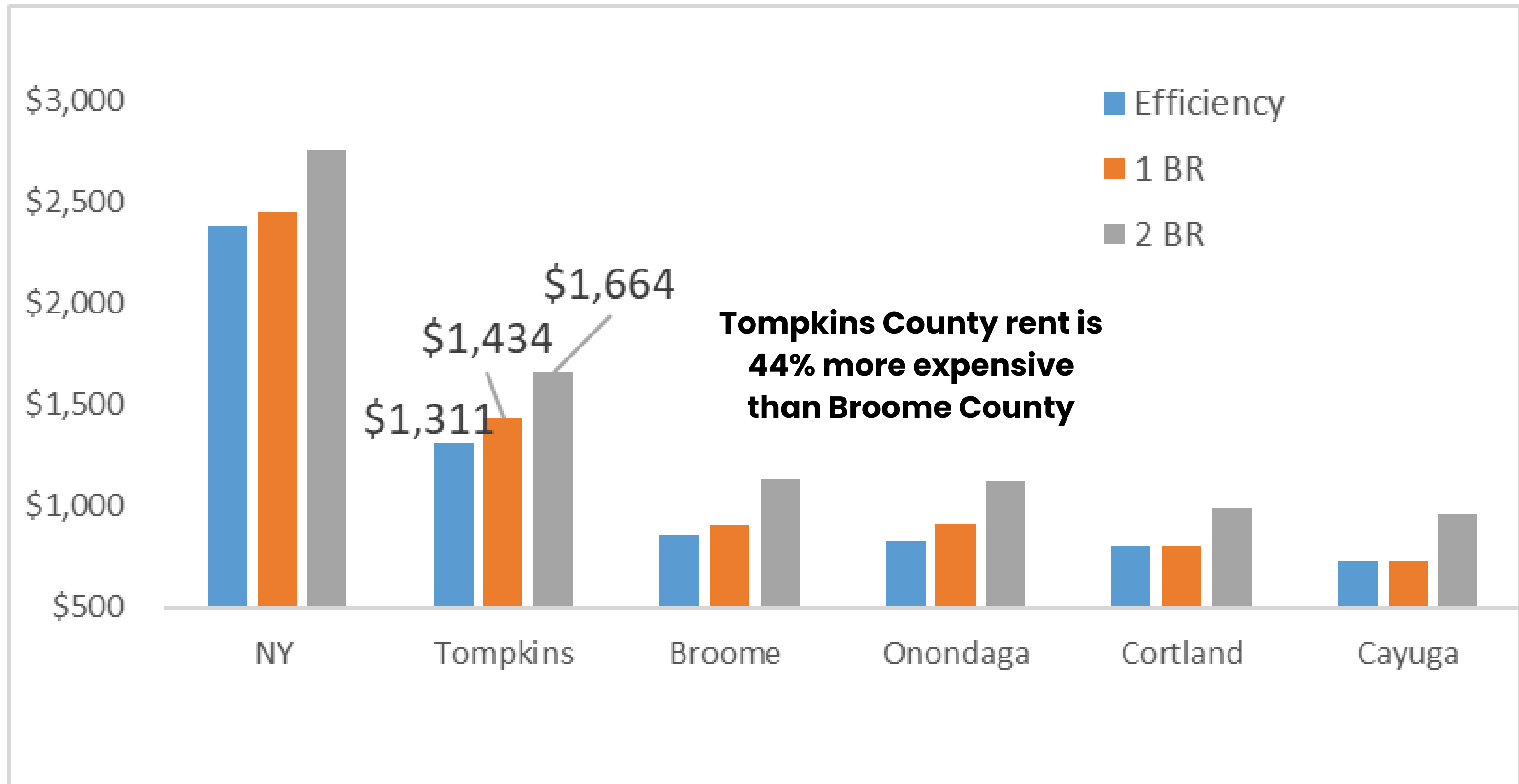
of renters in the city are cost-burdened with their rent.



**1 in 3**

individuals who enter permanent housing return to homelessness within 24 months.

# AMI & Rent in Tompkins County







# Categories of Homelessness (HUD)

**Category 1: Living in a place not meant for habitation, in emergency shelter, in transitional housing, or exiting an institution (jail, rehab, hospital) after less than 90 days with no permanent residence**

**Category 2: Imminent risk of homelessness in 14 days or less, with low/no income, no subsequent housing and no support**

**Category 3: Unaccompanied youth or families with children that have not had a lease within 60 days of seeking services, have moved <2x in last 60 days, have a child with a disability, and/ or face barriers to employment**

**Category 4: Person or family fleeing or attempting to flee domestic violence, and has no other residence or resources**

# Youth

Category 2:  
Received lease  
termination/  
warrant of eviction  
(14 days)

Category 2:  
Couchsurfing/Doubling up

# Adults

Category 1: Place not  
meant for human hab.  
or emergency shelter

Category 1: Exiting an  
institution stay of <90 days

Category 4: Fleeing  
Domestic Violence

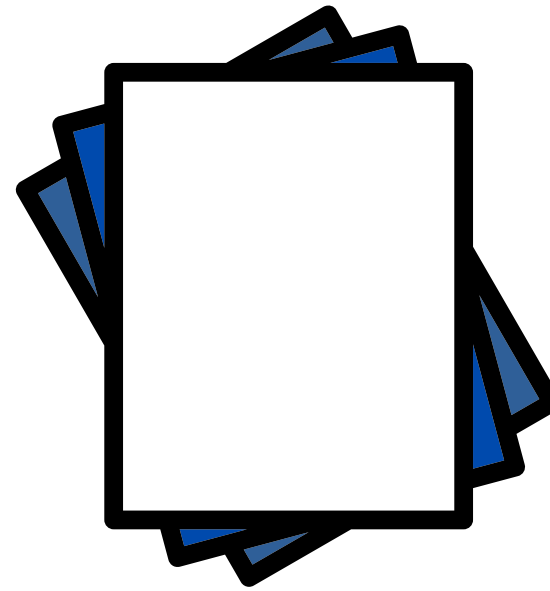


# Why do we do Coordinated Entry?



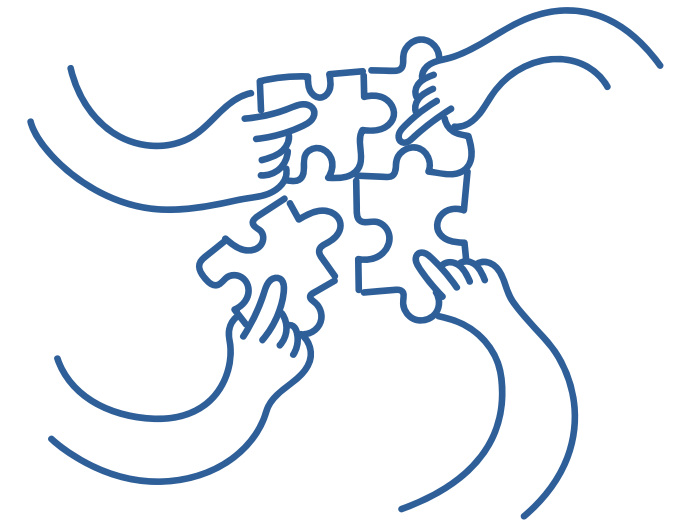
1

Ensure agencies are providing scarce housing resources to the most vulnerable clients



2

Reduce or eliminate the need for individual provider waitlists



3

Foster increased collaboration among homeless service providers

# CURRENT AVAILABLE HOUSING PROJECTS

Supportive services with monthly case management



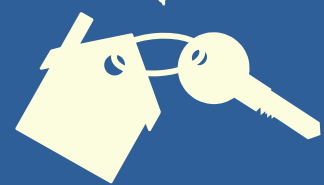
## TRANSITIONAL HOUSING (TH) SUBSIDIZED HOUSING 6 MONTHS TO 2 YEARS

Village at Ithaca, Village House (single rooms for youth)

\*OAR Endeavor House (re-entry single rooms for men)

\*OAR Sunflower Houses (re-entry single rooms)

\*CCTT A Place to Stay (single rooms for women)

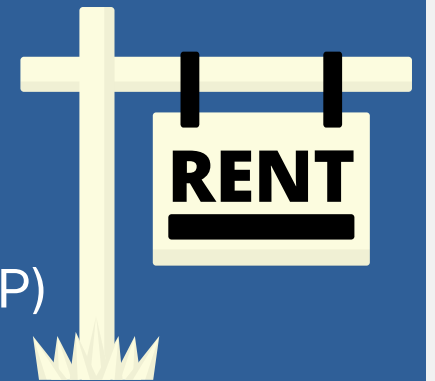


## RAPID REHOUSING (RRH) RENT SUBSIDIES 6 MONTHS TO 2 YEARS

\*Tenant Based Rent Assistance (TBRA)

\*Solutions to End Homelessness Program (STEHP)

\*Family Unification Program (FUP) Voucher



## PERMANENT SUPPORTIVE HOUSING (PSH) SUBSIDIZED HOUSING UNLIMITED TIME

TCAction Magnolia House (studio units)

TCAction Chartwell House (men in recovery)

TCAction Amici House (Youth)

TCAction Corn Street (Parenting Youth)

TCAction Arthaus (ESSHI units)

TCAction Asteri (ESSHI units)

Learning Web Scattered Site (Youth)



\*indicates that the program also has a separate application process



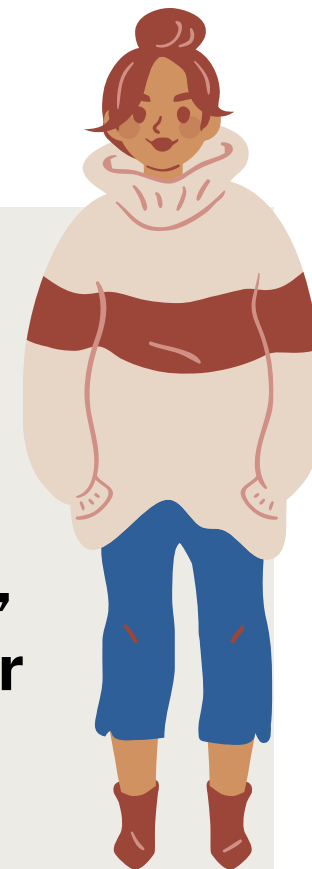
# What is Permanent Supportive Housing?

An intervention that combines affordable housing assistance with voluntary support services to address the needs of people experiencing chronic homelessness. The services are designed to build independent living skills and connect people with community-based health care, treatment and employment services.



**Offers case management and programming on- or off-site. Service participation is encouraged, but not mandated.**

**Designed to serve those with the highest needs. Limits common barriers to entry such as employment, income, mailing address, or sobriety requirements.**



**Can be site-based or scattered site. Residents are offered identical leases to other tenants and have tenant rights.**

# The Home, Together: Tompkins Plan

## Progress Report

### Access to housing

- 01** A commitment to building **100 studio and 1-bedroom units of Permanent Supportive Housing**.
- 02** **Low-barrier shelter** that removes pre-conditions and uses a trauma-informed approach to safety.
- 03** Using a **"housing surge" strategy** to quickly move people into housing/shelter.

### Incentive Programs

- 04** **Mitigation funds** for business owners and landlords serving people with severe service needs.
- 05** **Other incentives** for community members such as **shopping cart exchanges and cash for trash**
- 06** **Easy access move-in packages and assistance** for people moving from homeless to housed

### Expanding Sector Capacity

- 07** Three enhanced, centralized **housing navigator** positions to supplement existing outreach.
- 08** **Paid board positions** for people with lived experience to monitor and approve projects.
- 09** **Professional development opportunities** for people with lived experience.

Green: Completed or actively underway

Yellow: Partially complete or actively exploring

Grey: Not started

# FY24/25 Anticipated Awards

## NY-510 - Ithaca/Tompkins County CoC

Amici House	CoC	\$94,654
Chartwell House	CoC	\$50,341
DV Rapid Rehousing Project	CoC	\$109,587
Learning Web YHDP RRH	CoC	\$385,255
LW YHDP PSH Renewal FY2024	CoC	\$508,519
Magnolia House	CoC	\$50,483
NY1357L2C102302	CoC	\$104,655
NY-510 CoC Planning Project application FY2024	CoC	\$61,598
NY510 HMIS Tompkins County FY24	CoC	\$17,342
Open Doors for Runaway and Homeless Youth	CoC	\$119,286
Street to Housing Collaborative	CoC	\$117,168

<b>NY-510 Total :</b>		<b>\$1,618,888</b>
-----------------------	--	--------------------



## **2025 Continuum of Care Membership**

Advocacy Center of Tompkins County  
Area Congregations Together  
Catholic Charities Tompkins/Tioga  
Cayuga Health (including CMC and CMA)  
City of Ithaca Administration  
Tompkins County Department of Social Services  
Family and Children's Services  
Finger Lakes Independence Center  
Human Services Coalition of Tompkins County  
Ithaca Housing Authority  
Ithaca Neighborhood Housing Services  
Ithaca Urban Renewal Agency  
Law Enforcement Assisted Diversion Program  
Legal Assistance of Western NY  
The Learning Web  
Loaves and Fishes of Tompkins County  
Opportunities, Alternatives and Resources  
People With Lived Experiences of Homelessness  
REACH medical  
Recreation Support Services  
Salvation Army  
Second Wind Cottages  
Soldier-On  
Southern Tier AIDS Program  
St. John's Community Services  
Tompkins Community Action  
Tompkins County Administration  
Tompkins County Whole Health  
The Village at Ithaca



**Thank you!**

